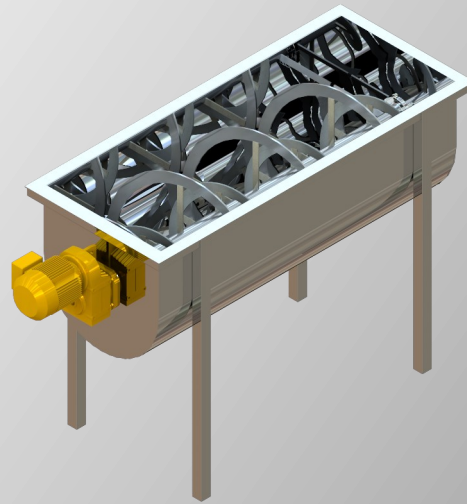


MIXING TECHNOLOGIES

Ribbon blenders provide a stand-alone solution for blending and heat transfer in dry bulk materials such as grains, powders and soils.

Reverse double helical blades promote multi-directional fluid flow. The outer blade promotes movement in one direction and the inner blade in the opposite direction. This ensures even distribution of both solids and heat throughout the trough.

JM Engineering's range of ribbon blenders cater to both small volume batch operations, as well as high volume continuous processing.



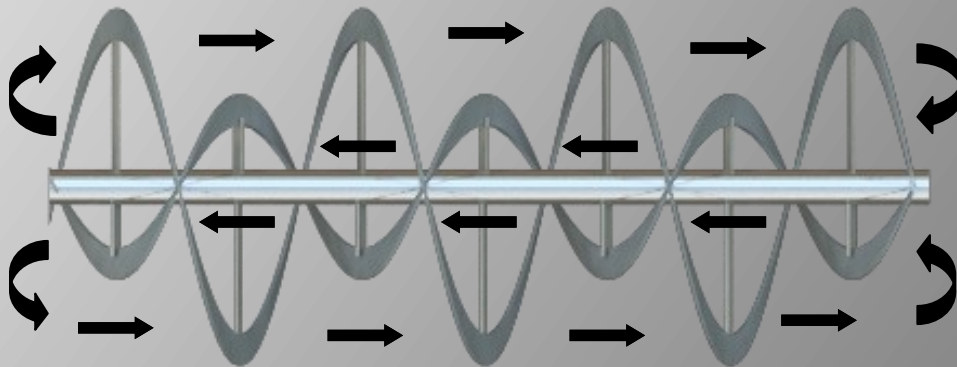
Above: Ribbon blenders feature a horizontal trough and a reverse double helix impeller.

Standard Features

- Stainless Steel trough and impeller
- 3Ph, 415v, 50Hz Motor
- IP56 Protection rating
- BSP threaded outlet connection

Options

- Exotic alloy construction
- Motor to suit international power supply
- Upgraded protection rating
- Flanged, tri-clamp or plain pipe outlet



Above: Reverse double helix impellers promote fluid flow in multiple directions. This leads to uniform composition and temperature throughout the product, and reduces processing time.

Please complete as much of the form below as possible and return the completed form via email (sales@jmengineering.com.au) or fax (+612 9757 4138). A JM Engineering representative will contact you to discuss your process requirements.

Contact Details

Name _____ Company _____
Email _____ Phone: _____
City _____ Country: _____

Fluid(s)

Viscosity _____ Specific Gravity _____
Temperature _____ Flow Rate _____

Process

Agitation Heat Transfer Flocculation Solid Suspension Homogenisation Blending

Other _____

Existing Vessel

Shape _____ Dimensions: _____
Fluid Depth Min: _____ Max: _____

Existing Mixer

Shaft Diameter _____ Shaft Length: _____
Power _____

Other Information

MIXING TECHNOLOGIES