

MIXING TECHNOLOGIES

JM Engineering top entry mixers are engineered to be robust, highly versatile and simple to maintain. Top entry mixers are available in a range of designs and sizes to cater for a huge variety of agitation, heat transfer, flocculation and solid suspension applications.

Standard Top Entry Mixers

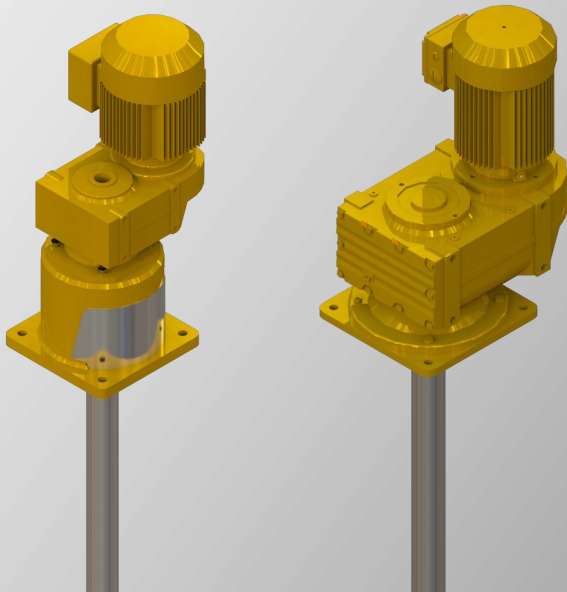
Standard top entry mixers are available in sizes ranging from 1.5 kW to 75+ kW and shaft sizes from 1m to over 10m in length.

Heavy Duty Top Entry Mixers

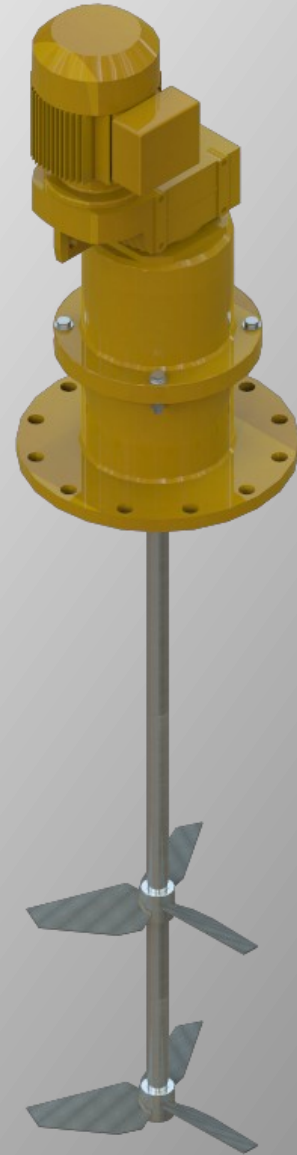
The most demanding mixing applications call for JM Engineering's range of heavy duty top entry mixers. These mixers are available from 50 kW to 200+ kW and shaft sizes from 4m to over 20m in length.

Standard Features

- Stainless Steel 316 shaft and impellers
- 1m ~ 20+m shaft
- 3Ph, 415v, 50Hz Motor (1.5kW ~ 200+ kW)
- Base plate mounting arrangement
- IP56 Protection rating



Above: Standard top entry mixers (*left*) feature a pedestal to house the seal and bearing. Heavy duty top entry mixers (*right*) incorporate a larger gearbox to withstand



Above: Standard top entry mixers consist of a gearbox and motor assembly, single or multiple pedestals, a shaft and single or multiple impellers.

Options

- Exotic alloy shaft and impeller
- Motor to suit international power supply
- Custom mounting arrangement
- Upgraded protection rating

Please complete as much of the form below as possible and return the completed form via email (sales@jmengineering.com.au) or fax (+612 9757 4138). A JM Engineering representative will contact you to discuss your process requirements.

Contact Details

Name _____

Company _____

Email _____

Phone: _____

City _____

Country: _____

Fluid(s)

Viscosity _____

Specific Gravity _____

Temperature _____

Flow Rate _____

Process

Agitation Heat Transfer Flocculation Solid Suspension Homogenisation Blending

Other _____

Existing Vessel

Shape _____

Dimensions: _____

Fluid Depth Min: _____

Max: _____

Existing Mixer

Shaft Diameter _____

Shaft Length: _____

Power _____

Other Information
